

# XCT85\_M 汽车起重机 / Truck Crane

## 技术规格书

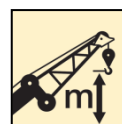
Basic technical specifications



85t



48m



65m



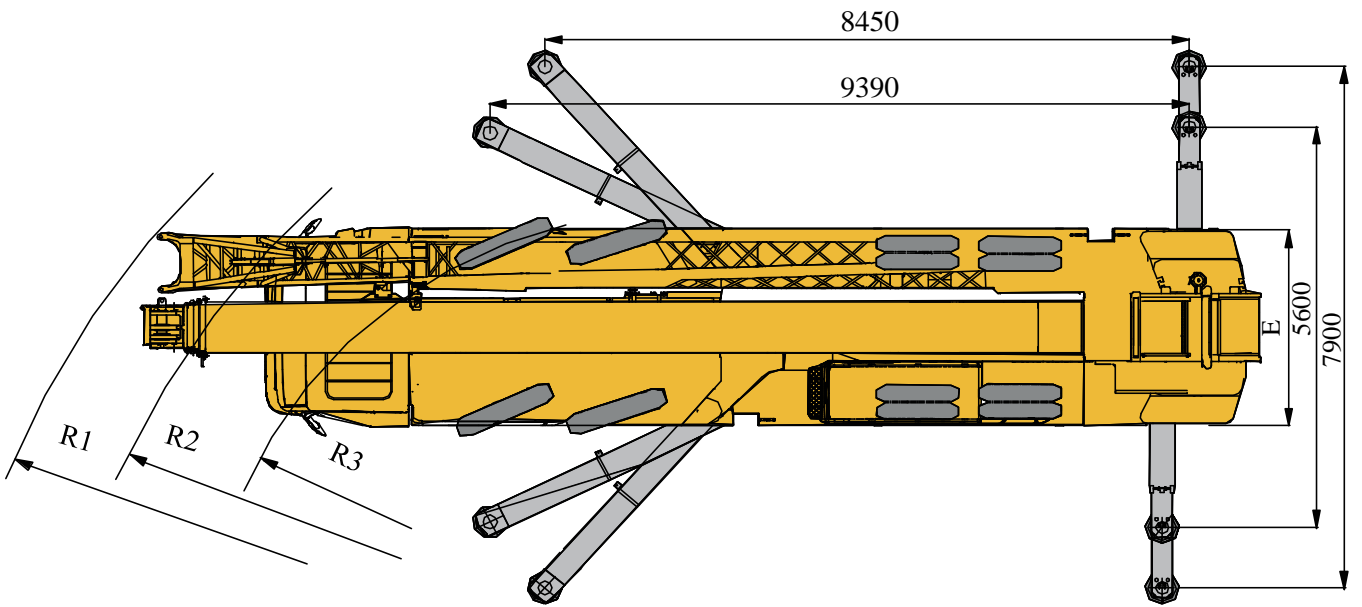
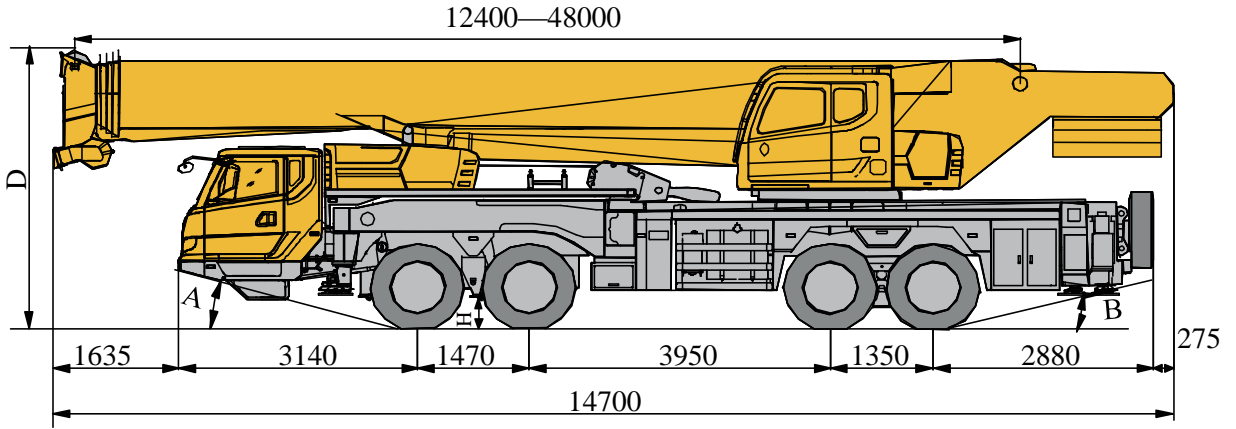
2020年7月 第2版

# 目录

## Contents

尺寸参数 Dimensions	3
技术规格 Product specifications	4-6
重量/作业速度 Weight / Working speeds	7
平衡重 Counterweight	8
臂架组合方案 Boom / Jib combinations	9-10
主臂 Boom	11-13
副臂 Jib	14-15
主要技术参数表 Table of main technical parameters	16-17
主要配套件明细表 Main parts list	18-19
符号标识 Description of symbols	20
注意事项 Notes	21

# 尺寸参数 Dimensions



12.00R24-20PR

A

16°

B

13.5°

D

3910

E

2750

R1

14950

R2

14050

R3

12000


H

305

# 技术规格

## Technical specifications

 底盘	配置
<b>车架</b>	徐工设计、制造，全覆盖式走台板，防扭转箱型结构，高强度钢材制造。●
<b>支腿</b>	4支腿，K形布置，后活动支腿采用双级水平支腿，水平伸缩和垂直伸缩由液压控制，底盘两侧装有支腿操纵机构，水平仪、照明灯和调速按钮，支腿油缸均设有单向阀，且垂直支腿带有双向液压锁。 支脚盘尺寸：Φ450mm 最大起重量时支腿反力：730KN ●
<b>发动机</b>	WD615.334，直列六缸水冷电控柴油发动机，中国重汽制造，额定功率247kW/2200rpm，最大扭矩1350Nm/1100-1600rpm，国III排放标准。●
<b>变速箱</b>	陕齿手动变速箱，10个前进档，2个倒档。●
<b>车桥</b>	陕西汉德高强度车桥，1、2桥转向，3、4桥驱动。●
<b>悬挂</b>	前后悬挂均为钢板弹簧。●
<b>轮胎</b>	12个轮胎，1个备胎，1、2桥均装单胎，3、4桥均装双胎。 轮胎规格：12.00R24-20PR★ ●
<b>制动</b>	行车制动：双回路气压制动，作用于所有车轮。 驻车制动：弹簧储能制动，作用于2、3、4轴车轮。 辅助制动：发动机排气制动和缸内缓速制动。●
<b>转向</b>	1、2桥机械转向+液压助力。●
<b>驾驶室</b>	豪华驾驶室。配备电动升降器的安全玻璃、可调式座椅、电动调节后视镜、可调节高度及角度方向盘、液晶显示器和收放机等。2公斤灭火器。 标配冷暖空调。●
<b>电气系统</b>	直流24伏特，串联12伏特的电池组2个。 发电机：28伏特-70安培。●
 臂架系统	配置
<b>主臂</b>	5节，“U”形截面的筒形焊接结构。双缸绳排伸缩机构 主臂长度：12.4m~48m。●
<b>臂端单滑轮</b>	单滑轮，安装在主臂顶端用于单股钢丝绳起重作业，起重性能与主臂相同，但最大起重量不超过5.5t。●
<b>固定副臂</b>	2节桁架式焊接结构，具有0°、15°、30°三种固定副臂安装角 固定副臂长度：10.5m/17.5m ●

 上车	配置
<b>结构</b>	徐工设计、制造，高强度钢材制造。●
<b>液压系统</b>	底盘发动机驱动变量柱塞泵，用于起升、变幅、伸缩。负载敏感式比例多路换向阀，带有抗冲击阀、防气蚀阀；风冷式液压油散热器； 液压油箱容积：1022L ●
<b>操纵方式</b>	液控先导操纵系统，由左右2个操纵手柄控制，由液压泵和比例阀进行液压先导式控制起重机的全部动作 ●
<b>主起升机构</b>	液压控制调速，装有双折线绳槽卷筒，由液压马达通过行星齿轮减速器驱动，内置常闭式制动器并带有平衡阀；●
<b>回转机构</b>	四点接触球式回转支承，由液压马达驱动行星齿轮回转机构减速器驱动，可连续回转360°；具有动力控制或自由回转的功能，可无级调速；回转杆设有鸣响开关；●
<b>变幅机构</b>	单支双作用前置液压变幅油缸，带有平衡阀 ●
<b>操纵室</b>	新型钢制操纵室，装有无视野死角的前景窗，安全玻璃，车窗装有遮阳板，推拉式车门，座椅靠背可倾斜定位，操纵杆安装在座椅两侧的扶手台上；带推拉踏板；前窗顶窗装有雨刮器；标配单冷空调；●
<b>安全装置</b>	液压平衡阀；液压溢流阀；液压双向锁；力矩限制器；三圈保护器，防止钢丝绳过放；臂头设置高度限位，防止钢丝绳过卷，三色报警灯； 风速仪、灭火罩、ABS、卷扬监视器 ○
<b>组合配重</b>	总重15t，有15t、10.5t、7.5t、4.5t和1.5t五种组合。●
<b>上车空调</b>	单冷T3空调，环境温度适应性可以达到52°。 空调制暖装置 ○


产品各部件明细如上所述，具体部件明细请参照产品报价单


符号说明：

- —— 表示标准配置；
- —— 表示选装配置。

# 技术规格

## Technical specifications

 Chassis	Configuration
<b>Frame</b>	Designed and manufactured by XCMG, it is made of high strength steel with fully covered walking surface and anti-torsion box-typed structure. ●
<b>Outriggers</b>	Four outriggers arranged in K-shape are hydraulically controlled by control levers. Double-stage rear outrigger beams are adopted. There is an outrigger control mechanism located at each side of the chassis, and there is a level gauge, an illuminator and speed buttons in each control mechanism. There is a check valve fitted in each outrigger cylinder, and a double-way hydraulic valve fitted in each jack cylinder. Outrigger float diameter: φ450 mm Reaction force of outrigger at max. lifting load: 730 KN ●
<b>Engine</b>	WD615.334, in-line, 6-cylinder, water cooled, electric control diesel engine, made by SINOTRUK, with rated power of 247 kW/2200 rpm and max. torque of 1350 Nm/1100-1600 rpm, compliant to China III emission standard. ●
<b>Transmission</b>	Mechanical transmission, made by Shaanxi Fast Gear Co., Ltd., 10-forward speed and 2-reverse speed. ●
<b>Axles</b>	High strength axles, made by Shaanxi Hande Axle Co., Ltd. 1st and 2nd axles are for steering, and 3rd and 4th axles are for driving. ●
<b>Suspensions</b>	Leaf spring suspensions. ●
<b>Tires</b>	12 tires and 1 spare tire, 1st and 2nd axles are equipped with single tire, 3rd and 4th axles are equipped with double-tire. ● Tire specifications: 12.00R24-20PR★
<b>Brakes</b>	Service brake: double-circuit air pressure brake acting on all wheels. Parking brake: spring-loaded brake, acting on the wheels of axles 2, 3 and 4. ● Auxiliary brake: engine exhaust brake and engine retarder brake.
<b>Steering</b>	Mechanical steering mechanism with a hydraulic booster for 1st and 2nd axles. ●
<b>Driver's cab</b>	Luxurious cab. Safety glass, electrically operated door window lifters, adjustable seats, electrical adjustable mirrors, steering wheel adjustable in height and angle, liquid crystal display and radio-cassette player are equipped. A fire extinguisher of 2 kg is available. Heater and air conditioner are standard. ●
<b>Electrical system</b>	24V DC, two sets of 12 V battery in series. ● Generator: 28 V-70 A.


 Boom system	Configuration
<b>Boom</b>	5-section boom with U-shaped cross-section, welded structure. Double-cylinder plus ropes telescoping system. Boom length: 12.4 m ~ 48 m. ●
<b>Single top</b>	Fitted at boom head, used for single line operation. ● Its lifting performance is the same as that for boom, but the maximum lifting load does not exceed 5.5 t.
<b>Jib</b>	Two-section lattice jib, welded structure; three offset angles of 0°, 15° and 30°. ● Fixed jib length: 10.5 m ~ 17.5 m.

**Product parts list is as mentioned above. Please refer to the product quotation for specific parts**

- — Standard
- — Optional

# 技术规格

## Technical specifications

	Superstructure	Configuration
<b>Frame</b>	Designed and manufactured by XCMG; made of high strength steel.	●
<b>Hydraulic system</b>	Variable pump driven by chassis engine, used for hoisting, elevating and telescoping operations. Load sensitive proportional multi-way change valve with impact resistance valve and cavitation-proof valve integrated; air-cooled hydraulic oil radiator. Tank capacity: 1022 L	●
<b>Operating mode</b>	Pilot hydraulic control is used for controlling the superstructure. All crane movements are controlled by hydraulic pump and proportional valve through two control levers at left and right sides.	●
<b>Main winch system</b>	Hydraulic control is used for speed regulation. The system is driven by a hydraulic motor through a planetary gear reducer, with a normally closed brake, a balance valve and a grooved drum equipped.	●
<b>Slewing system</b>	Four-point contact-ball slewing ring is driven by the planetary gear reducer of slewing mechanism, which is driven by a hydraulic motor, and may continuously slew 360°. Power control and free slewing function as well as stepless speed regulation are available. There is a horn switch fitted on the slewing control lever.	●
<b>Elevating System</b>	A front support double-acting hydraulic cylinder is equipped for elevating operation, with a balance valve fitted.	●
<b>Operator's cab</b>	New steel cab with a full-view windshield, safety glass, sun shield and adjustable operator's seat. Windshield wiper and roof window wiper are fitted. Crane control levers are integrated into armrests. A sliding door and a pull-out step are designed for easy and safe access to the cab. Air conditioning is standard.	●
<b>Safety devices</b>	Hydraulic balance valve, hydraulic relief valve, double-way hydraulic valve, LMI, lowering limiter for preventing wire rope from over-releasing and anti-two block at boom head for preventing wire rope from over-winding , tri colored light bar	●
	Anemometer, spark arrestor, ABS, winch monitor	○
<b>Combined counterweight</b>	Total weight is 15 t. Five counterweight configurations of 15 t, 10.5 t, 7.5 t, 4.5 t and 1.5 t are available.	●
<b>Air conditioning system</b>	T3 Air conditioner, which has 52 ° environment temperature for adaptability.	●
<b>operator's cab</b>	Heating device	○

**Product parts list is as mentioned above. Please refer to the product quotation for specific parts**

● — Standard

○ — Optional

## 重量 Weight



车桥 Axle	1	2	3	4	总重量 Total weight
t	10	10	13	13	46



吊钩 Hook	倍率 Parts of line	吊钩重量 Weight (kg)	吊钩尺寸 Dimensions (mm)	备注 Remarks
90 t	15	1035	1841×703×610	单钩 Single hook , 选配 Optional
55 t	8	470	1600×520×370	单钩 Single hook , 标配 Standard
7 t	1	210	717×370×370	单钩 Single hook , 标配 Standard

## 作业速度 Working speeds



12.00R24



1 ~ 90

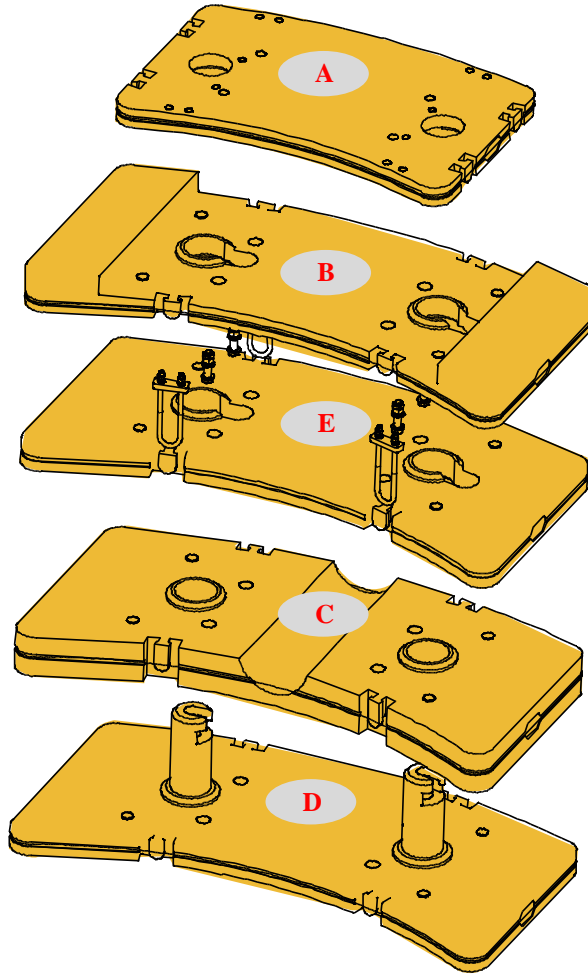


40%



作业机构 Drive	作业速度 Working speed	最大单绳拉力 Max. single line pull	钢丝绳直径/长度 Rope diameter/ length
	0-145 m/min, 单绳, 第四层 m/min, single line, 4th layer	5.75t	20 mm/240 m
	0-90 m/min, 单绳, 第四层 m/min, single line, 4th layer	5.75t	20 mm/180 m
	0-2 r/min		
	从-2°抬起至81°约55s Approx. 55 s for boom elevation from -2 ° to 81 °		
	从12.4m伸出至48m约110s Approx. 110 s for boom extension from 12.4 m to 48 m		

# 平衡重 Counterweight



平衡重 Counterweight	A	B	C	D	E
尺寸 (长×宽×高) mm Dimensions ( L×W×H ) (mm)	1890×1300 ×110	2700×1490×225	2700×1490×270	2700×1490×620	2700×1490×147
重量 t Weight ( t )	1.5	3	4.5	3	3

工况模式 Working mode	1.5t	4.5t	7.5t	10.5t	15t
组合形式 Combinations	A	A+D	A+B+D	A+B+D+E	A+B+C+D+E

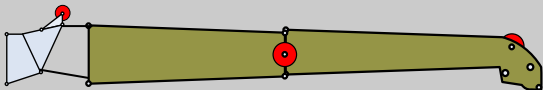
## 臂架组合方案

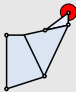


### Boom / Jib combinations

副臂 - 10.5m  
Jib - 10.5m



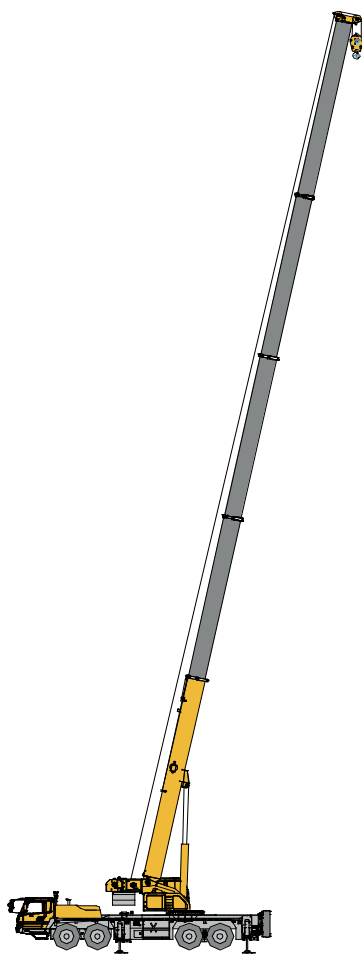
副臂 - 17.5m  
Jib - 17.5 m



部件 Component	结构形式 Structure	尺寸 (长×宽×高) mm Dimensions ( L×W×H ) (mm)	重量 kg Weight (kg)
连接架 Connecting bracket		1910×740×1050	221
一节副臂总成 First jib section assembly		9340×620×900	567
二节副臂总成 Second jib section assembly		6520×300×430	259

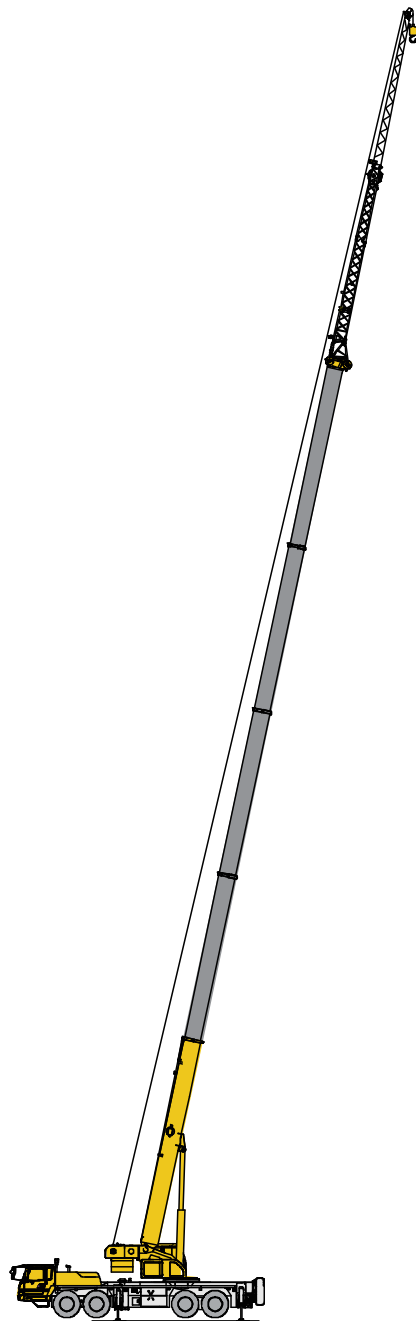
# 臂架组合方案

## Boom / Jib combinations



主臂  
Telescopic boom

T : 12.4~48 m

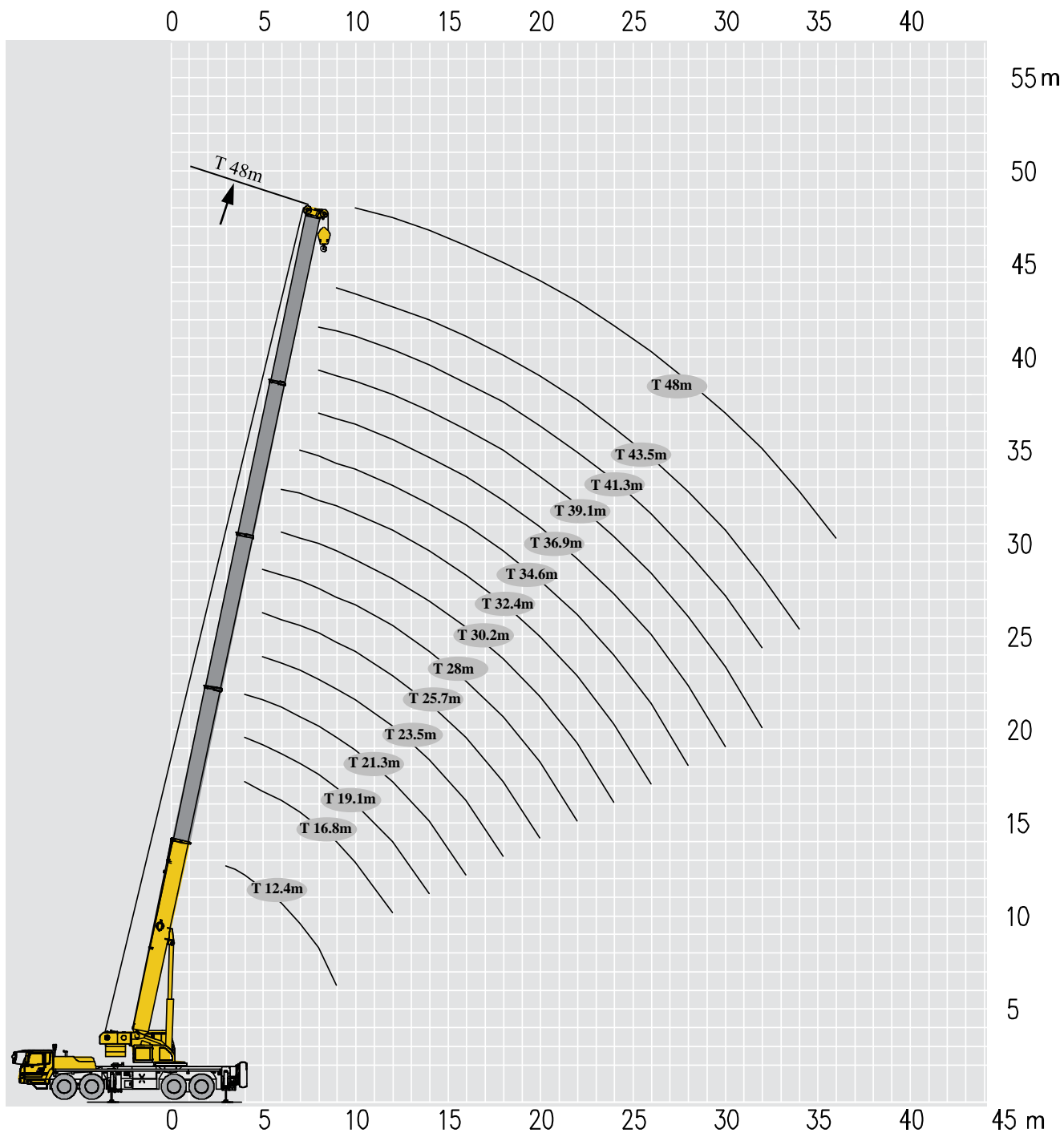


副臂  
Jib

T : 48 m  
J : 10.5~17.5 m

# 起升高度曲线图 Lifting heights

主臂  
Boom



# 起重性能表

## Lifting capacities

T 12.4~48 m


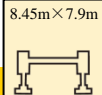

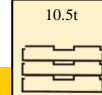
	12.4-48m		8.45m×7.9m		360°		1.5t										
	12.4m	16.8m	19.1m	21.3m	23.5m	25.7m	28m	30.2m	32.4m	34.6m	36.9m	39.1m	41.3 m	43.5	48m		
3	75															3	
3.5	75															3.5	
4	75	63.3	37.1	46												4	
5	62	58	34.5	45	36.5	29.5	35									5	
6	49.3	48.6	32.3	40	34.5	27.2	34.7	28.1	20.1							6	
7	34	33.4	30.5	33	32.6	25.1	31.9	26.6	18.8	25.4						7	
8	25.3	24.8	27.6	24.4	26.8	23.6	26.2	25.2	17.8	23.3	17.9	14.1	17.0			8	
9	19.7	19.3	21.8	18.9	21.1	22.4	20.5	22.1	16.7	21.5	17.1	13.3	16.2	12.3		9	
10		15.4	17.8	15.1	17.1	18.7	16.6	18	15.8	17.5	16.3	12.2	16.2	11.8	11.1	10	
12		10.2	12.5	9.9	11.9	13.4	11.4	12.8	13.9	12.2	13.3	11.1	12.8	11	10.5	12	
14			9.1	6.7	8.5	9.9	8	9.3	10.4	8.8	9.8	10.2	9.4	10.2	9.7	14	
16				4.5	6.2	7.6	5.8	7	8	6.5	7.5	8.3	7	7.8	7.4	16	
18					4.6	5.9	4.1	5.3	6.3	4.9	5.8	6.6	5.4	6.1	5.7	18	
20						4.6	2.9	4.1	5	3.6	4.5	5.3	4.1	4.8	4.5	20	
22							2	3.1	4	2.7	3.6	4.3	3.2	3.9	3.5	22	
24								2.3	3.3	1.9	2.8	3.5	2.4	3.1	2.7	24	
26									2.6	1.3	2.1	2.8	1.7	2.4	2	26	
28										0.8	1.6	2.3	1.2	1.9	1.5	28	
30											1.1	1.8	0.8	1.2	1	30	

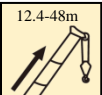

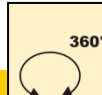
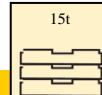
	12.4-48m		8.45m×7.9m		360°		7.5t										
	12.4m	16.8m	19.1m	21.3m	23.5m	25.7m	28m	30.2m	32.4m	34.6m	36.9m	39.1m	41.3 m	43.5	48m		
3	85															3	
3.5	75															3.5	
4	75	63.3	37.1	46												4	
5	62	58	34.5	45	36.5	29.5	35									5	
6	54	50	32.3	40	34.5	27.2	34.7	28.1	20.1							6	
7	43.7	43.1	30.5	38	32.6	25.1	31.9	26.6	18.8	25.4						7	
8	32.9	32.4	28.8	32	31	23.6	29.5	25.2	17.8	23.3	17.9	14.1	17			8	
9	25.9	25.5	27.4	25.1	27.3	22.4	26.7	23.9	16.7	21.9	17.1	13.3	16.2	12.3		9	
10		20.6	23.1	20.3	22.4	21.2	21.8	22.7	15.8	20.5	16.3	12.2	16.2	11.8	11.1	10	
12		14.4	16.6	14.1	15.9	17.4	15.5	16.8	14.3	16.3	14.8	11.1	15.1	11	10.5	12	
14			12.6	10.2	11.9	13.3	11.5	12.7	12.7	12.3	13.2	10.2	12.8	10.2	10.3	14	
16				7.5	9.2	10.5	8.8	10	11	9.5	10.4	9.6	10	9.6	9.7	16	
18					7.2	8.5	6.7	7.9	8.9	7.5	8.4	8.5	8	8.7	8.3	18	
20						6.9	5.2	6.3	7.3	5.9	6.8	7.6	6.4	7.1	6.7	20	
22							4	5.1	6.1	4.7	5.6	6.3	5.1	5.9	5.5	22	
24								4.1	5.1	3.7	4.6	5.3	4.2	4.9	4.5	24	
26									4.2	2.9	3.8	4.5	3.4	4	3.7	26	
28										2.2	3.1	3.8	2.7	3.4	3	28	
30											2.5	3.2	2.1	2.8	2.4	30	
32												2.7	1.6	2.3	1.9	32	
34														1.9	1.5	34	
36															1.1	36	

# 起重性能表

## Lifting capacities

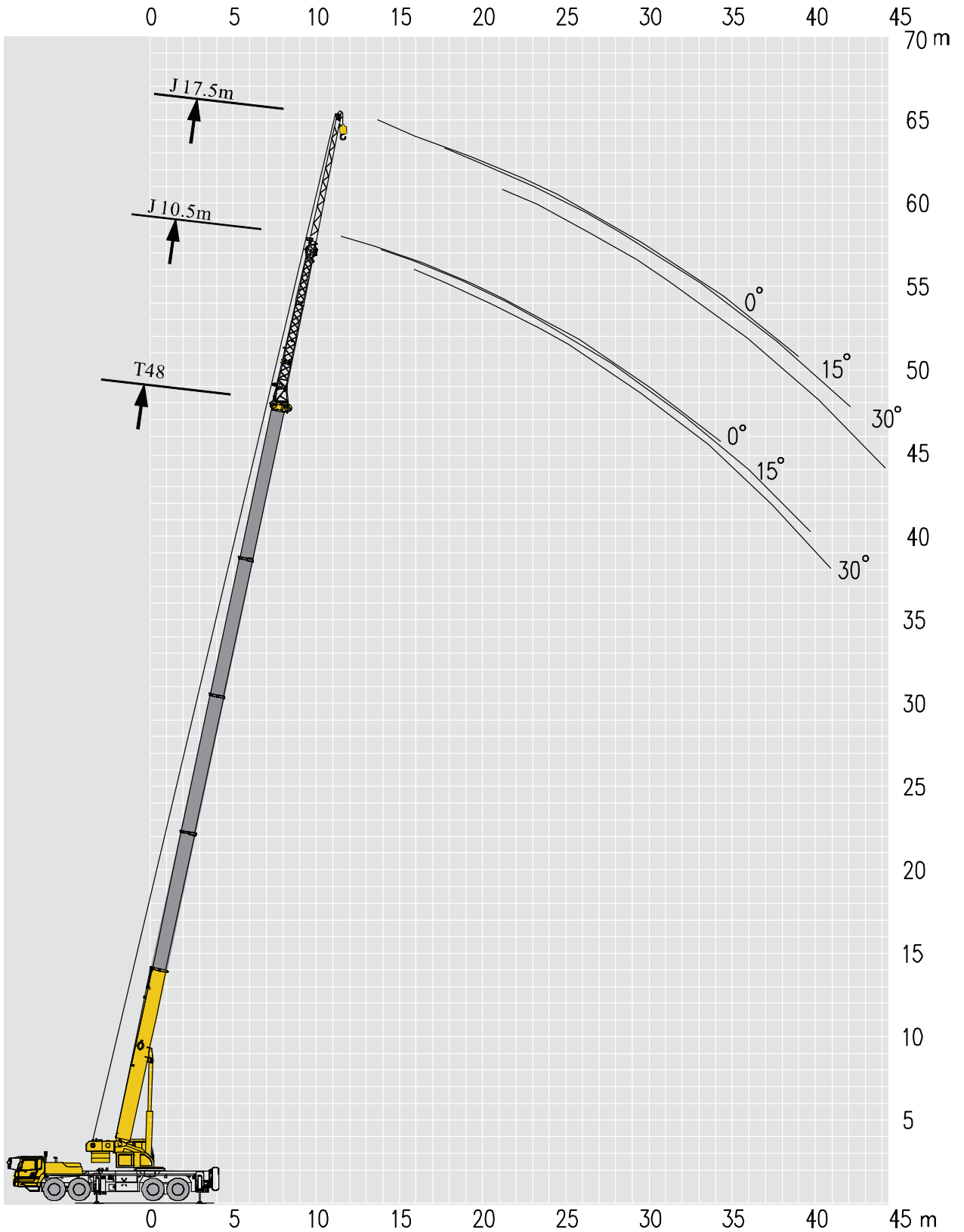
T 12.4~48 m

	   															
	12.4m	16.8m	19.1m	21.3m	23.5m	25.7m	28m	30.2m	32.4m	34.6m	36.9m	39.1m	41.3 m	43.5	48m	
3	85															3
3.5	75															3.5
4	75	63.3	37.1	46												4
5	62	58	34.5	45	36.5	29.5	35									5
6	54	50	32.3	40	34.5	27.2	34.7	28.1	20.1							6
7	45	44	30.5	38	32.6	25.1	31.9	26.6	18.8	25.4						7
8	36.4	35.8	28.8	35.5	31	23.6	29.5	25.2	17.8	23.3	17.9	14.1	17.0			8
9	28.8	28.3	27.4	28	29.6	22.4	27.5	23.9	16.7	21.9	17.1	13.3	16.2	12.3		9
10		23.1	24.8	22.7	24.8	21.2	24.3	22.7	15.8	20.5	16.3	12.2	16.2	11.8	11.1	10
12		16.2	18.5	15.9	17.8	19.2	17.3	18.7	14.3	18.2	14.8	11.1	15.1	11	10.5	12
14			14.1	11.7	13.4	14.9	13	14.3	12.7	13.8	13.3	10.2	14.0	10.2	10.3	14
16				8.8	10.5	11.8	10	11.2	11.4	10.8	11.7	9.6	11.3	9.6	9.7	16
18					8.3	9.6	7.9	9	10	8.6	9.5	8.5	9.1	8.9	9.1	18
20						7.9	6.2	7.4	8.3	7	7.8	7.7	7.4	8.1	7.7	20
22							4.9	6.1	7	5.6	6.5	7.06	6.1	6.8	6.4	22
24								5	5.9	4.6	5.4	6.2	5	5.7	5.4	24
26									5	3.7	4.5	5.3	4.1	4.8	4.5	26
28										2.9	3.8	4.5	3.4	4.1	3.7	28
30											3.2	3.9	2.8	3.4	3.1	30
32												3.3	2.2	2.9	2.5	32
34														2.4	2.1	34
36															1.7	36

	   															
	12.4m	16.8m	19.1m	21.3m	23.5m	25.7m	28m	30.2m	32.4m	34.6m	36.9m	39.1m	41.3 m	43.5	48m	
3	85															3
3.5	75															3.5
4	75	63.3	37.1	46												4
5	62	58	34.5	45	36.5	29.5	35									5
6	54	50	32.3	40	34.5	27.2	34.7	28.1	20.1							6
7	45	44	30.5	38	32.6	25.1	31.9	26.6	18.8	25.4						7
8	38	38	28.8	36.4	31	23.6	29.5	25.2	17.8	23.3	17.9	14.1	17.0			8
9	32	32	27.4	32.3	29.6	22.4	27.5	23.9	16.7	21.9	17.1	13.3	16.2	12.3		9
10		26.7	24.8	26.4	27.8	21.2	25.6	22.7	15.8	20.5	16.3	12.2	16.2	11.8	11.1	10
12		19	21.3	18.7	20.6	19.2	20.1	20.9	14.3	18.3	14.8	11.1	15.1	11	10.5	12
14			16.3	14	15.7	17.1	15.3	16.5	12.7	16	13.3	10.2	14.0	10.2	10.3	14
16				10.7	12.4	13.7	11.9	13.1	11.4	12.7	11.9	9.6	12.6	9.6	9.7	16
18					10	11.3	9.5	10.7	10.5	10.3	11	8.5	10.7	8.9	9.1	18
20						9.4	7.7	8.8	9.6	8.4	9.3	7.7	8.9	8.3	8.2	20
22							6.3	7.4	8.3	6.9	7.8	7.06	7.4	7.6	7.4	22
24								6.2	7.1	5.8	6.6	6.4	6.2	6.9	6.5	24
26									6.1	4.8	5.6	5.9	5.3	5.9	5.6	26
28										4	4.8	5.4	4.4	5.1	4.7	28
30											4.1	4.8	3.7	4.4	4	30
32												4.2	3.1	3.8	3.4	32
34														3.3	2.9	34
36															2.5	36

# 起升高度曲线图 Lifting heights

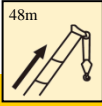

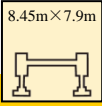

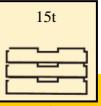
副臂  
Jib

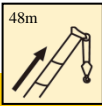
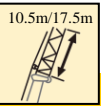
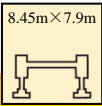

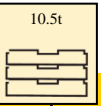



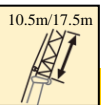
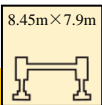

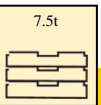
# 起重性能表

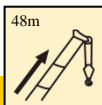
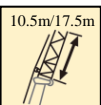
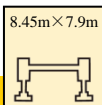
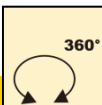
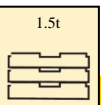
## Lifting capacities

Jib 10.5 m/17.5 m

	    						
	10.5m			17.5m			
	0°	15°	30°	0°	15°	30°	
80	5.5	4	3.3	3.3	2.2	1.5	80
78	5.3	3.8	3.2	3	2	1.35	78
75	5	3.7	3	2.8	1.9	1.25	75
72	4.5	3.5	2.5	2.3	1.8	1.2	72
70	4.2	3.2	2.4	2	1.7	1.15	70
65	3.5	2.8	2	1.8	1.5	1	65
60	3	2.2	1.8	1.5	1.2	0.9	60
55	2	1.8	1.5	1.2	1	0.85	55
50	1	0.8	0.8				50

	    						
	10.5m			17.5m			
	0°	15°	30°	0°	15°	30°	
80	5.5	4	3.3	3.3	2.2	1.5	80
78	5.3	3.8	3.2	3	2	1.35	78
75	5	3.7	3	2.8	1.9	1.25	75
72	4.5	3.5	2.5	2.3	1.8	1.2	72
70	4.2	3.2	2.4	2	1.7	1.15	70
65	3.5	2.8	2	1.8	1.5	1	65
60	2.5	2.2	1.8	1.5	1.2	0.9	60
55	1.7	1.6	1.5	1.1	1	0.85	55
50	1	0.8	0.8				50

	    						
	10.5m			17.5m			
	0°	15°	30°	0°	15°	30°	
80	5.5	4	3.3	3.3	2.2	1.5	80
78	5.3	3.8	3.2	3	2	1.35	78
75	5	3.7	3	2.8	1.9	1.25	75
72	4.5	3.5	2.5	2.3	1.8	1.2	72
70	4.2	3.2	2.4	2	1.7	1.15	70
65	2.9	2.6	2	1.8	1.5	1	65
60	1.9	1.7	1.6	1.4	1.2	0.9	60
55	1.2	1.1	1.1	0.9	0.8	0.7	55

	    						
	10.5m			17.5m			
	0°	15°	30°	0°	15°	30°	
80	5.5	4	3.3	3.3	2.2	1.5	80
78	5.3	3.8	3.2	3	2	1.35	78
75	5	3.7	3	2.8	1.9	1.25	75
72	4.2	3.5	2.5	2.3	1.8	1.2	72
70	3.4	2.9	2.4	2	1.7	1.15	70
65	1.9	1.7	1.6	1.3	1	0.9	65
60	0.9	0.8	0.7				60

# 主要技术参数表

## Table of main technical parameters

类别 Category	项目 Item	单位 Unit	参数 Parameter	
尺寸参数 Dimensions	外形尺寸 (长×宽×高) Dimensions (length×width×height)	mm	14700×2750×3910	
	轴距 Wheel base	mm	1470+3950+1350	
	轮距 (前/后) Track (Front/ Rear)	mm	2316/2316/2063/2063	
	前悬/后悬 Front/ Rear overhang	mm	3140/2880	
	前伸/后伸 Front/ Rear extension	mm	1635/275	
重量参数 Weight	最大允许总质量 Total vehicle mass in travel configuration	kg	46000	
	轴荷 Axle load	一轴 1st axle	kg	10000
		二轴 2nd axle	kg	10000
		三轴 3rd axle	kg	13000
四轴 4th axle		kg	13000	
动力参数 Power	发动机型号 Engine model	—	WD615.334	
	额定功率/转速 Engine rated power/rpm	kW/(r/min)	247/2200	
	最大净功率/转速 Max. net power/rpm	kW/(r/min)	245/2200	
	最大输出扭矩/转速 Max. output torque/rpm	N.m/(r/min)	1350/1100-1600	
行驶参数 Travel	最高车速 Max. travel speed	km/h	≥90	
	最低稳定车速 Min. stable travel speed	km/h	2.5 ~ 3	
	最小转弯直径 Min. turning diameter	m	≤24	
	臂头最小转弯直径 Min. turning diameter at boom tip	m	≤29.9	
	最小离地间隙 Min. ground clearance	mm	305	
	接近角 Approach angle	°	16	
	离去角 Departure angle	°	13.5	
	制动距离 (制动初速度为30km/h) Braking distance (at 30 km/h)	m	≤10	
	最大爬坡能力 Max. grade ability	%	≥40	
	百公里油耗 Fuel consumption per 100 km	L	40	
噪音 Noise	加速行驶机外噪声 Exterior noise level	dB(A)	≤84	
	驾驶员耳旁噪声 Noise level at seated position	dB(A)	≤80	

# 主要技术参数表

## Table of main technical parameters

类别 Category	项目 Item		单位 Unit	参数 Parameter	
主要性能参数 Main performance	最大额定总起重量 Max. total rated lifting capacity		t	85	
	最小额定工作幅度 Min. rated working radius		m	3	
	转台尾部回转半径 Turning radius at turntable tail	平衡重处 Counterweight	mm	4350	
		副卷处 Auxiliary winch	mm	4545	
	最大起重力矩 Max. load moment	基本臂 Base boom	kN.m	3175	
		最长主臂 Fully-extended boom	kN.m	1607	
		最长主臂+副臂 Fully-extended boom + Jib	kN.m	1011	
	支腿跨距 Outrigger span	纵向 Longitudinal	m	8.45	
		横向 Lateral	m	7.9(5.6)	
	起升高度 Hoist height	基本臂 Base boom	m	12.7	
		最长主臂 Fully-extended boom	m	48	
		最长主臂+副臂 Fully-extended boom + Jib	m	65	
	起重臂长度 Boom length	基本臂 Base boom	m	12.4	
		最长主臂 Fully-extended boom	m	48	
最长主臂+副臂 Fully-extended boom + Jib		m	65.5		
副臂安装角 Jib offset angle		°	0、15、30		
工作速度参数 Working speed	起重臂起臂时间 Boom raising time		s	≤55	
	起重臂全伸时间 Boom fully extending time		s	≤110	
	最大回转速度 Max. slewing speed		r/min	≥2.0	
	支腿收放时间 Outrigger extending and retracting time	水平支腿 Outrigger beam	缩 Retracting	s	≤20
			伸 Extending	s	≤25
		垂直支腿 Outrigger jack	缩 Retracting	s	≤30
			伸 Extending	s	≤40
起升速度 (单绳,第四层,空载) Hoisting speed (single line, 4th layer, no load)	主起升机构 Main winch	m/min	≥145		
	副起升机构 Auxiliary winch	m/min	≥90		
噪声 Noise	机外辐射 Exterior noise level		dB ( A )	≤122	
	司机位置处 Noise level at seated position		dB ( A )	≤90	

# 主要配套件明细表

## Main parts list

序号 No.	名称 Name	型号 Model	厂家 Manufacturer
1	下车发动机 Chassis engine	WD615.334	中国重型汽车集团有限公司 China National Heavy Duty Truck Group Co., Ltd.
2	变速箱 Transmission	10JSD160TB	陕西法士特齿轮有限责任公司 Shaanxi Fast Gear Co., Ltd.
3	转向器 Steering gear	GX120C-06 NT12086C-3411001	江门兴江转向器有限公司 Jiangmen Xingjiang Steering Gear Co., Ltd. 南通环球转向器制造有限公司 Nantong Huanqiu Steering Gear Co., Ltd.
5	车桥 Axle	一轴 1st axle : HDZ10P040026000 二轴 2nd axle : HDZ10P040026001 三轴 3rd axle : HDZ13T331406017 四轴 4th axle : HDZ13T331506021	陕西汉德车桥有限公司 Shaanxi Hande Axle Co., Ltd.
6	轮胎 Tire	12.00R24-20PR★	双钱轮胎股份有限公司 Double Coin Tyre Co., Ltd.
7	下车液压油泵 Chassis hydraulic pump	L10VO100DFLR/31R- PSC12K24- 020+L10VO100DFLR/31R- PSC12K02- 020/LA10VO100DFLR/31R- VSC12K24+LA10VO100DFLR/3 1R-VSC12K68 , 1163132274A	中航力源液压股份有限公司 AVIC Liyuan Hydraulic Co. , LTD 博世力士乐(中国)有限公司 Bosch Rexroth Co., Ltd. 泊姆克(天津)液压有限公司 (TIANJIN) Hydraulic INC., LTD
8	回转支承 Slewing ring	011.60.2256.101.04.03D1 011.60.1660.10	徐州罗特艾德回转支承有限公司 Xuzhou Rothe Erde Slewing Bearing Co., Ltd. 马鞍山方圆回转支承股份有限公司 Slewing Ring
9	主/副起升马达 Main and auxiliary winch motor	A6VM107HD1D/63W-VZB020B 、 SH7V 108 OE SAO LM RIE BO 1 7S V 108 80、 GA6VM107HD1D/63W- VZB020B-0700  A2FM107/61W-VZB020、 SH11C M 108 ME OE SAO LM2 RV GA2FM107/61W-VZB02	博世力士乐有限公司、 Bosch Rexroth Co., Ltd. 意大利布雷维尼流体动力股份公司 意大利布雷维尼流体动力集团 SAMHYDRAULIK 中航力源液压股份有限公司 AVIC Liyuan Hydraulic Co., Ltd.
10	主/副起升减速机 Main and auxiliary winch reducer	JQ201.56 QJB260.56	徐州圣邦机械有限公司 Xuzhou Sunbun Machinery Co., Ltd. 青岛海力达齿轮箱有限公司 Qingdao Hailida Gear Case Co., Ltd.
11	主/副起升钢丝绳 Main and auxiliary winch rope	20NAT4V×39S+5FC1960	江苏狼山钢绳股份有限公司 Jiangsu Langshan Wire Rope Co., Ltd. 巨力索具股份有限公司 China Juli Sling Co., Ltd.

# 主要配套件明细表

## Main parts list

序号 No.	名称 Name	型号 Model	厂家 Manufacturer
12	回转马达 Slewing motor	A2F80W2Z2	中航力源液压股份有限公司 AVIC Liyuan Hydraulic Co., Ltd. 北京华德液压工业集团有限责任公司 Beijing Huade Hydraulic Industry Group Co., Ltd. 浙江圣邦科技有限公司 ZHEJIANG SUNBUN TECHNOLOGY CO., LTD.
13	回转减速机 Slewing reducer	JH120.45 HJB210.45	徐州圣邦机械有限公司 Xuzhou Sunbun Machinery Co., Ltd. 青岛海力达齿轮箱有限公司 Qingdao Hailida Gear Case Co., Ltd.
14	变幅油缸 Elevating cylinder	XCT85_M.28	徐州徐工液压件有限公司 Xuzhou Hydraulic Parts Co., Ltd. XCMG 成都成缸液压设备制造有限公司 CHENGDU CHENGGANG HYDRAULIC EQUIPMENT MANUFACTURING CO., LTD
15	伸缩油缸 Telescoping cylinder	XCT85_M.16.1/XCT85_M.16.2	徐州徐工液压件有限公司 Xuzhou Hydraulic Parts Co., Ltd. XCMG 成都成缸液压设备制造有限公司 CHENGDU CHENGGANG HYDRAULIC EQUIPMENT MANUFACTURING CO., LTD
16	力矩限制器 Load moment limiter	HC4900	徐州赫思曼电子有限公司 Xuzhou Hirschmann Electronics Co., Ltd.
17	主臂板材 Steel plate for boom	BS960QC	宝钢 BAOSTEEL
18	整车液压系统管接头 Hydraulic pipe fittings	—	建湖特佳液压件有限公司 Jianhu Tejia Hydraulic parts Co., Ltd. 徐工集团徐州液压附件厂 Xuzhou Hydraulic Parts Co., Ltd. XCMG
19	垂直油缸 Jack cylinder	XCT85_M.69	徐州徐工液压件有限公司 Xuzhou Hydraulic Parts Co., Ltd. XCMG
20	水平油缸 Extension cylinder	XCT75_M.68	徐州徐工液压件有限公司 Xuzhou Hydraulic Parts Co., Ltd. XCMG
21	摆动油缸 Swing cylinder	XCT75_M.35	徐州徐工液压件有限公司 Xuzhou Hydraulic Parts Co., Ltd. XCMG

# 符号标识

## Description of symbols

### 常规标识

#### General symbols

	上车 Superstructure		底盘 Chassis
	起重能力 Lifting capacity		车桥 Axle
	吊臂长度 Boom length		行驶速度 Driving speed
	工作幅度 Radius		爬坡能力 Grade ability
	吊臂仰角 Boom angle		轮胎 Tires
	主臂起升高度 Hoist height with boom		支腿 Outriggers
	固定副臂长度 Fixed jib length		吊钩 Hook block
	副臂安装角 Jib offset angle		平衡重 Counterweight
	副臂起升高度 Hoist height with jib		卷扬 Winch
	主臂加长节 Boom extension		360°全回转 360° operation of the boom
	带载行驶 Travel with a load		

## 注意事项

### Notes

1. 表中额定总起重量值，是在平整的坚固地面上本起重机能够保证的最大总起重量，包括吊钩和吊具的重量，所以为了估算重物重量，必须减去上述的装置重量。
2. 表中的工作幅度为起吊重物离地时起重物到起重机回转轴线的水平距离，是包括起重臂变形量在内的实际值，因而起吊前应考虑起重臂变形量。
3. 只允许在5级(瞬时风速14.1m/s，风压125N/m<sup>2</sup>)风以下进行作业。
4. 吊重前操作者必须对物体的重量和工作范围了解后选择合适的作业工况，严禁超出表中的数值。幅度及臂长在相邻两个数值之间时，应依据两个数值中较小值确定起重作业。
5. 应按主臂仰角范围作业，即使是空载，也不应使主臂仰角处于范围外，谨防整机倾翻。
6. 表中的主臂长度应要按照每节臂的伸缩要求进行伸出。

1. The total rated loads given in the rated load charts are the maximum lifting capacity when the crane is set up on firm and level ground, which includes the weight of the hook block and slings. The weight of above-mentioned devices should be deducted from the rated lifting load.
2. The working radius shown in the rated load charts is the radius when the load is lifted off the ground, and it is the actual value including loaded boom deflection. Take boom deflection into consideration before beginning a lifting operation.
3. A lifting operation is permissible only when the wind force is below grade 5 (instantaneous wind speed is 14.1 m/s, wind pressure is 125 N/m<sup>2</sup>).
4. Before beginning lifting operation, the operator should know the weight of the load to be lifted and its working range, and then select proper working conditions. Never operate the crane beyond the limit shown in the chart. Use the lower value from the chart when the boom length or working radius is between the range of values.
5. Observe the boom angle limit. Never operate the crane with the boom angle beyond the recommended limit even if a load is not being carried. Otherwise, the crane will tip.
6. The boom should be extended according to the telescoping code shown by percentage (or digits, which means the percentage of boom sections extended).



地址：中国江苏徐州市铜山路165号

Add : No.165 Tongshan Road Xuzhou Jiangsu China

电话(Tel) : +86-516-83462242/83462350

质量监督电话(Quality Inquiry Tel) : +86-516-87888268

备件电话(Spare Parts Tel) : +86-516-83461542

邮编(Post Code) : 221004

网址(Web) : [www.xcmg.com/qizhongji](http://www.xcmg.com/qizhongji)

**服务热线 Service Tel**

**400-110-9999**

**400-001-5678**



本印刷品不属于合同。出于产品不断改进的需要，我们保留对产品型号、参数、配置进行变更的权利，恕不另行通知。图片仅供参考，具体产品以实物为准。图片中产品可能并非标准配置，部分部件可能需要另行购置。办理牌照和上路行驶需遵守当地法规。

This print does not belong to the contract. We reserve the right to modify the design (such as product model, parameters and configuration) without notice for improvement. The pictures are just for reference. The product in the picture may not be standard configuration. Some parts need to be purchased separately. Conform to the local laws for license application and road traveling.